

2021 ANNUAL REPORT

COROMANDEL INDEPENDENT LIVING TRUST

Improving the lives of all people in
the upper Coromandel Peninsula





CONTENTS

| | |
|----|-----------------------------------|
| 4 | Chairperson Report |
| 6 | Executive Trustee Report |
| 8 | Our Vision and Mission |
| 9 | Our Projects |
| 10 | Project History |
| 11 | Organisational Structure |
| 12 | Covid 19 Response |
| 14 | The Resource Centre |
| 16 | Vocational Services |
| 18 | Artists In the Making |
| 20 | Whanau Support Services |
| 21 | Coromandel Hub |
| 22 | Environmental Initiatives |
| 23 | Incredible Years Parent Programme |
| 24 | Kiwi Can |
| 27 | Our Supporters |

CHAIRS REPORT



VICKI SEPTON
CHAIR OF THE
CILT BOARD OF
TRUSTEES

On behalf of the trustees of Coromandel Independent Living Trust, I am pleased to present the 2021 Annual Report.

Our service and programme delivery was again impacted by the Covid epidemic during 2021. Throughout this challenging time, we continued to successfully deliver our wide range of programmes to our community, including whanau and community support services, social housing, disability support, education programmes, transport assistance, and environmental projects, demonstrating the resilience and capability of our organisation. Of particular note was the ability of our staff to identify and directly support those most impacted by Covid, drawing on our close partnerships with other agencies, authorities and services in our community to support the most vulnerable in our community.

Despite the challenges of 2021, we continued to grow and thrive as an organisation. We were able to implement new and exciting projects and initiatives which aim to strengthen and build resilience in our community.

In October, construction commenced on the Community Hub: a project that has been in the planning for a number of years and is the result of the tireless commitment of our Executive Trustee and his team. While providing a much-needed collaborative space to meet the social and community needs of our community, the building will help ensure the sustainability of our services into the future.

A further innovative development during 2021 was the commencement of work on the native plant nursery project. This project will provide school to work transition experiences for rangitahi, and will support environmental education sustainability programmes, in close collaboration with the local schools, iwi, and local environmental organisations, This is an exciting new approach to meeting identified needs in our community.

We received a significant grant from the Manatū Taonga Ministry for Culture and Heritage CARE fund towards the end of

2021. This grant will enable us to implement a three-year project providing access to, and participation in, art-making activities for people who experience barriers to participation, as well as creating employment and skill development opportunities. The initial sessions provided by local artists to participants have received very positive feedback, so we look forward to the future development of this programme and the expected gains it will bring to those most in need.

As a sign of the recognition of the trust held in the community of CILT, we were approached to assume the operation of the Coromandel Budget and Foodbank. We have agreed to this as it aligns with our values and objectives, and allows for the closer co-ordination of support for those most in need.

As an organisation we understand the need to collaborate and partner in order to deliver our services, and to grow. We could not to achieve what we have without the support of a wider community. I wish to acknowledge the many funders, organisations, groups and individuals in our local community and beyond, including our wonderful team of volunteers, who continue to support us and enable us to successfully deliver our services and grow as an organisation.

On behalf of the trustees, I would like to acknowledge and thank our Executive Trustee, Mike Noonan, and the staff for the skills, knowledge, and commitment they bring to our organisation. We are fortunate to have such an expert and dedicated team.

I also acknowledge and thank my fellow trustees for their continuing work and commitment. After many years of valuable service, Andy Reid has resigned as a trustee. Andy has been a wise counsel and his input and support has been invaluable. We wish him well in his future endeavours. We warmly welcome our newest trustee, Te Ariki Paitai.

As a strong and committed team, we can look forward to bringing to fruition our many exciting and significant developments in 2022.

Vlcki Sephton

Chairperson

EXECUTIVE TRUSTEE REPORT



MIKE NOONAN
EXECUTIVE
TRUSTEE

This past year Covid has forced us to be more innovative in our working patterns. All of us at CILT have had to find different ways to operate. This has sometimes meant working in the usual office, but at other times working from home or even sometimes from a car or van. Our workers have found themselves talking to clients at their front gate while the client stands two metres away. At all times staff have ensured they were accessible by phone or Internet, which is sometimes in itself challenging due to the patchy coverage around Coromandel. I am proud to say that our staff rose to the occasion and continued to deliver CILT's services and advance our projects as evidenced in the Chairperson's Report. Our delivery never wavered and this has been recognised by both local and national Government agencies. This led to CILT being designated a Community Connector which meant we were contracted by the Government to support people with Covid 19. We have developed a highly skilled and dedicated staff to deliver this service.

In her comprehensive report on our programmes, Vicki has talked about the exciting developments at the Community Hub and then the Nursery which is situated on the land adjacent to the Hub. As well as providing a purpose built home for CILT the Hub and adjoining campus will provide educational, environmental and recreational possibilities for all the community. It also means that all our projects, including the newly integrated Budget and Foodbank, will be on site. The exceptions of course are the Bizarre, the Kaumatua Flats, the Goldmine and Transfer Station and our very successful Artists in the Making programme in Whitianga.

The Incredible Years Parenting Programme is run wherever the demand is. It is disappointing that 2021 was the last year of the Kiwi Can Programme after 18 years of delivery. We acknowledge the Graeme Dingle Foundation for offering us the opportunity, which CILT believes made a positive difference to children's lives in Coromandel and Colville. We thank the enthusiastic team of Kiwi Can Leaders over those years, some of whom went on to become schoolteachers themselves.

It is said that a successful organisation is more than just the sum of its parts. By being housed together on one campus CILT staff from all our different projects will be better able to support each other, talk about new ideas and have greater interaction with the community as they use the Hub's facilities. We are fortunate to have a very committed group at CILT, from the very involved Trustees, through the talented and dedicated staff to the great band of volunteers in the varied programmes.

I could not do this job without the help and support of each and every one of the individuals who make up this team. A very special thanks to the volunteers, we could not deliver our services without you. It is all of you who make CILT a greater whole than just the sum of its parts. Adding to that whole is a new trustee, Te Ariki David Patai, from Harataunga . As well as strong local knowledge David has a background in government agencies, with the Ministry of Social Development, Department of Internal Affairs and the Thames Coromandel District Council.

The pandemic could have been a shipwreck but has actually proved the strength and solidarity of CILT. We have experimented with new ways of working, and found them useful and successful. We have extended our forms of communication, and found them effective. We move confidently into the future, bringing our tried and tested programmes into a new home, and with exciting new projects on the horizon.

Mike Noonan

Executive Trustee



COROMANDEL INDEPENDENT LIVING TRUST

OUR VISION & MISSION



OUR VISION

A community where all people are empowered to reach their full potential.

OUR MISSION

To work collaboratively to strengthen our community in response to need.



OUR VALUES

KAITIAKITANGA

Respectful Relationships

WHAKAWHANAUNGATANGA

Our Obligations

MANAAKITANGA

Care for all people

OUR STRATEGIC GOALS FOR 2021

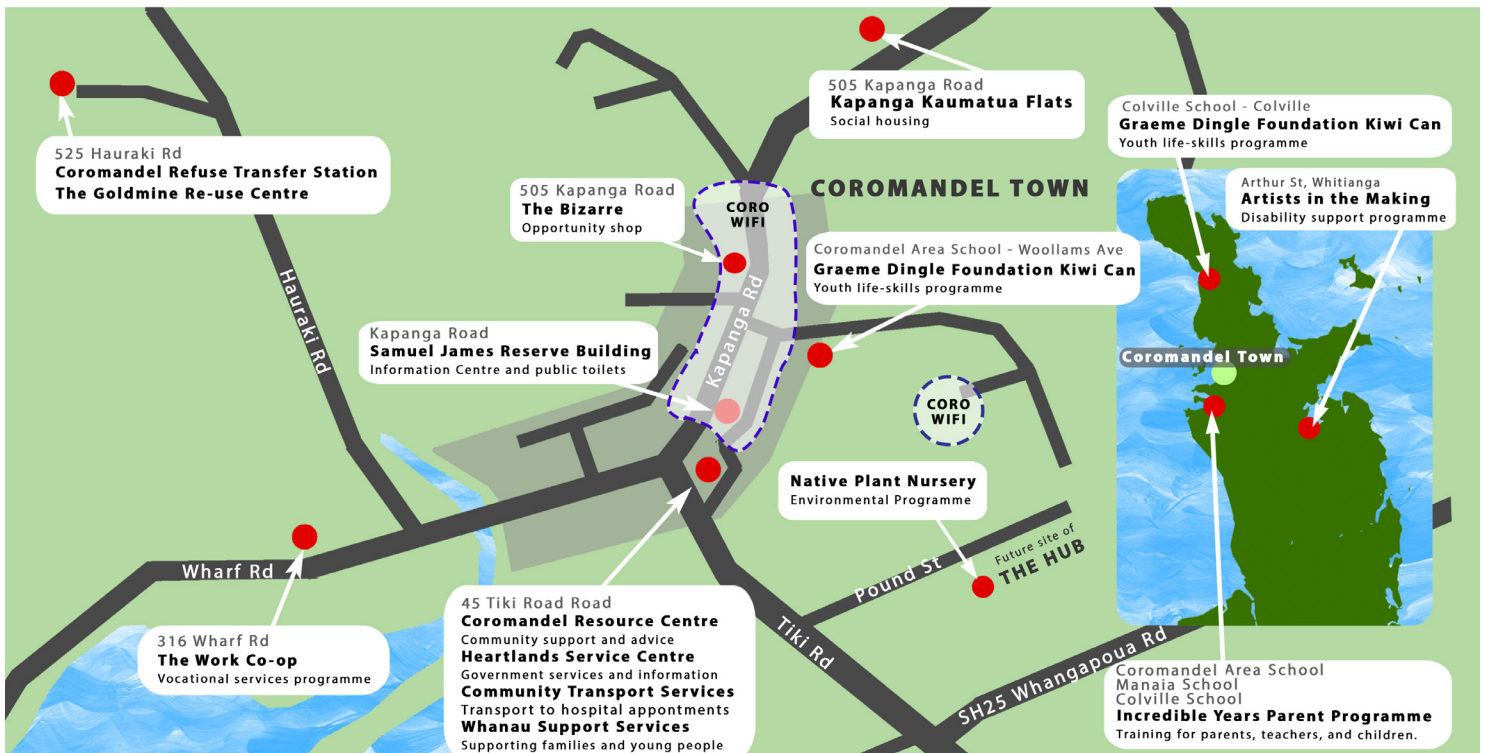
- Establish a community hub
- Develop social enterprise programmes and opportunities
- Grow community support services capacity and capabilities

OUR PROJECTS IN 2021

IN 2021 WE DELIVERED 22 PROJECTS ACROSS THE COMMUNITY:

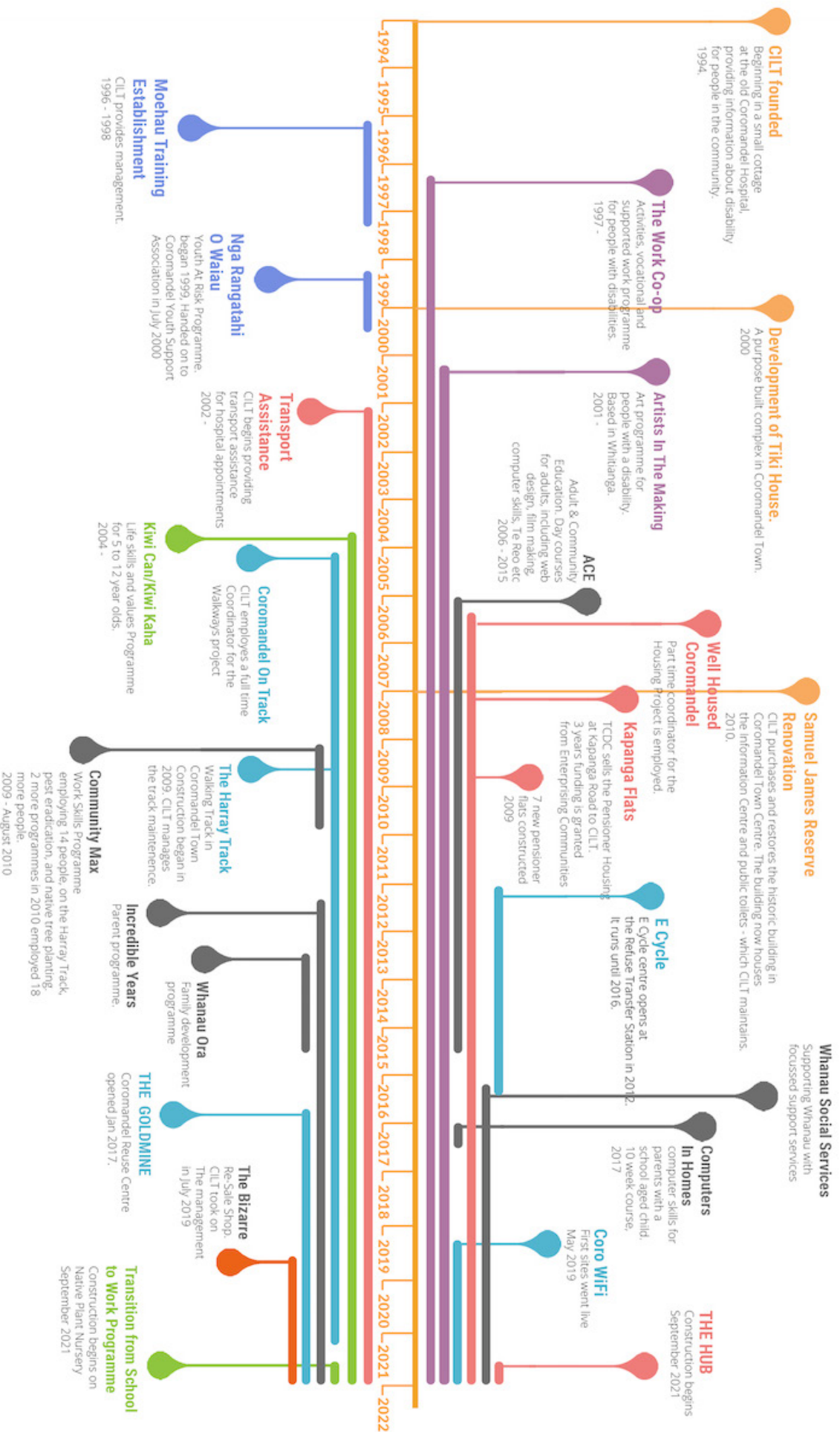
COMMUNITY TRANSPORT
WHANAU SOCIAL SERVICES
STRENGTHENING FAMILIES
WHANAU RESILIENCE
INTEGRATED SAFETY RESPONSE
COVID RESPONDER
INCREDIBLE YEARS PARENT PROGRAMME
THE BIZARRE - RESALE SHOP
THE GOLDMINE - REUSE CENTRE
COROMANDEL REFUSE TRANSFER STATION

SKINNY JUMP
CORO WIFI
THE RESOURCE CENTRE
HEARTLANDS SERVICE CENTRE
KAUMATUA HOUSING
ARTISTS IN THE MAKING CREATIVE SPACES
TE MANA TANGATA - THE WORK CO-OP
COROMANDEL BUDGET ADVISORY
COROMANDEL FOODBANK
KIWI CAN PROGRAMME
SAMUEL JAMES RESERVE AMENITIES

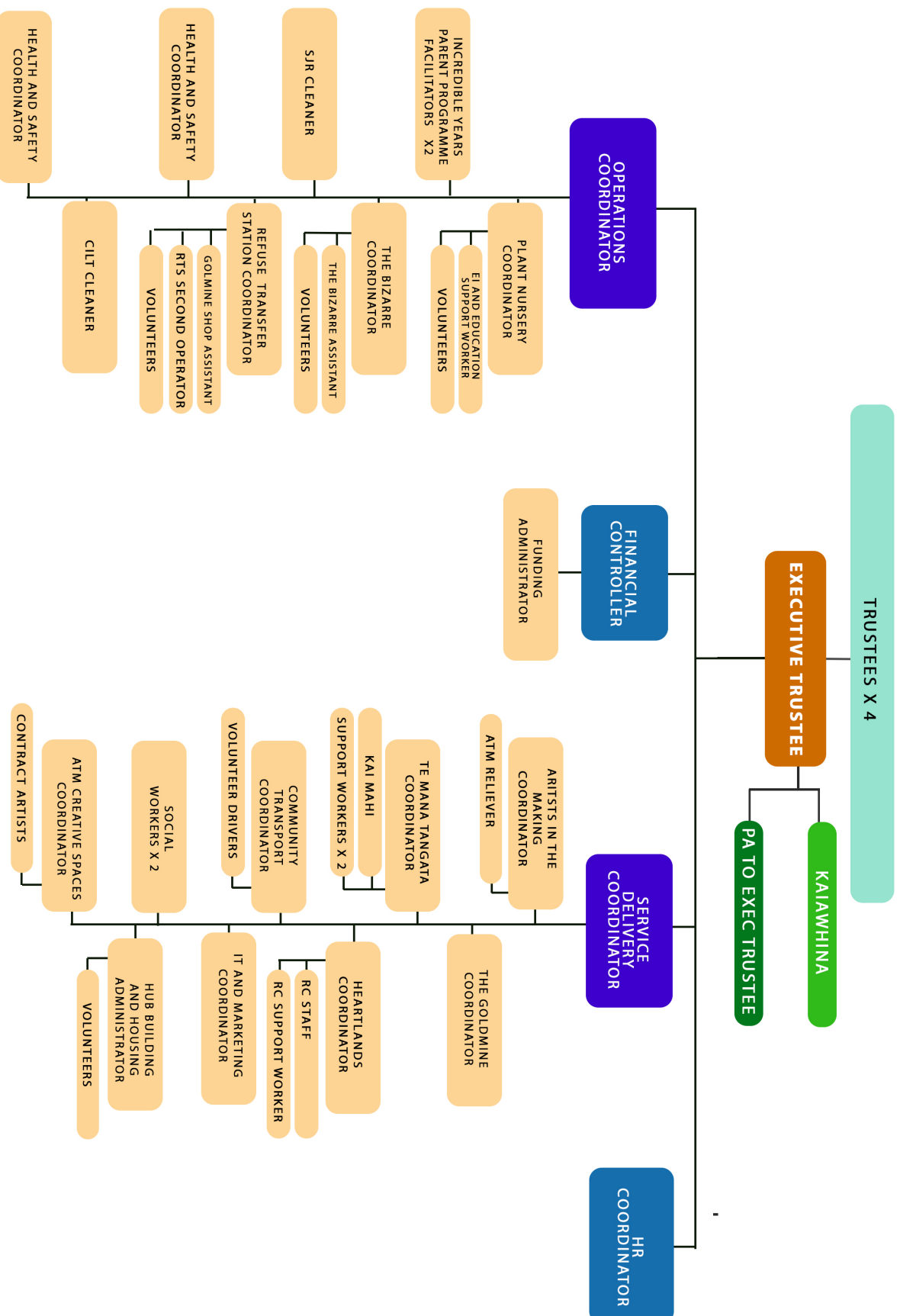


FOR MORE INFORMATION ABOUT OUR CURRENT PROJECTS HEAD TO OUR WEBSITE:
WWW.CILT.ORG.NZ/PROGRAMMES

1994 - 2021 PROJECT HISTORY



2021 ORGANISATIONAL STRUCTURE



COVID -19 RESPONSE IN 2021

The COVID-19 pandemic evolved significantly throughout 2021. CILT implemented various operations to support and meet the needs of the wider community, and employees.

Employees maintained regular communication with other groups in the area to identify and directly support the most vulnerable in our community. Various employees in CILT Management attended regular Local Welfare meetings, and worked closely with the local Police, School, Foodbank and Four Square to ensure community members in need had access to the necessities and the support they required.

We ensured all staff stayed connected and supported, and were encouraged to devise innovative and creative ways to continue to deliver our services through lockdowns and various COVID-19 Alert Levels.

As New Zealand transitioned from COVID-19 Alert Levels, to the COVID-19 Protection Framework (Traffic Light System) HR, Services Delivery and Health and Safety Coordinators worked together to establish new procedures for all sites and employee roles to operate. All roles of the organisation were evaluated in a Risk Assessment to establish if their role was exposed to risks related to the pandemic, if PPE and other safety precautions were sufficient, or if a mandated vaccination was required.

In November 2021 a vaccination mandate was added to the The COVID-19 Public Health Response Act 2020 (the COVID-19 Act) for key public service sectors. This affected the Education and Social Welfare roles of our organisation and was implemented in accordance with the Public Health Order.

All CILT sites and projects have been equipped with resources and PPE to ensure the health and safety of all staff, volunteers, participants and customers of CILT is paramount.

“Throughout this challenging time, we continued to successfully deliver our wide range of programmes to our community, including whanau and community support services, social housing, disability support, education programmes, transport assistance, and environmental projects, demonstrating the resilience and capability of our organisation and the dedication of our team.”

“At the beginning of 2021 CILT and New Zealand has had it rough because of Covid-19. We had to make changes to how we worked, how we help others with travel and with their medical needs. But we manage to get the job done even with the ups and downs throughout the year.

When CILT and all New Zealand went into lockdown, we had to work from home and only leave our homes to do shopping or to get medicine. After lockdown, the staff of CILT got our covid jabs to protect ourselves from the virus and to keep our jobs. Since then, we've been able to help the fair people of Coromandel with their needs. CILT continues it's work to help those in the community and to try and do our best to help any way we can.



Sam Ward

CILT office assistant

THE RESOURCE CENTRE

THE RESOURCE CENTRE IS THE BUSY HUB OF OUR ACTIVITIES. OUR TRAINED STAFF PROVIDE ADVICE AND SUPPORT FOR PEOPLE AND WE COORDINATE OVER 15 PROGRAMMES AND SERVICES TO IMPROVE THE LIVES OF ALL PEOPLE IN THE UPPER COROMANDEL

The Resource Centre at Tiki House is our busy public centre for residents in the heart of Coromandel town, where throughout 2021 we co-ordinated our various projects and services. Between 9am and 3pm Monday to Thursday throughout the year, our staff offered a wide range of support services to the community including: fielding calls for travel assistance, booking the van to Thames for our weekly van trips, and arranging room bookings.

The Resource Centre staff also supported people coming in to use our free public computers to access information on services and support and to communicate with other agencies and government departments. The public was also able to make use of our printing and laminating services.

CILT co-ordinated the use of space in Tiki House, ensuring our community had access to other essential services, including Coromandel Budget Advisory, the Foodbank, Counsellors and Mental Health Services.



COMMUNITY TRANSPORT SERVICE

In 2021 we funded 479 trips for people to attend Waikato District House Board approved appointments in Thames and Waikato. This is a vital service for our isolated, rural community. We had a roster of 10 volunteer drivers to take people to their appointments.

HEARTLANDS SERVICE CENTRE

We are a Heartlands Service Centre. Heartlands is a government funded inter agency initiative that enables people in rural areas to access government services.

In 2021 we provided consultation space for The Department of Corrections, Waikato District Health Board, Work and income NZ, and Te Korowai Hauora o Hauraki.

The Heartland Service Centre enabled CILT to grow community support services and capabilities and to co-ordinate service delivery across a variety of agencies.

PUBLIC COMPUTERS

Our free, public computers were used on a regular basis to access email, print documents on our high quality printer, communicate with friends and family, and search for information online.

We were able to provide on site technical advice to our community through our skilled IT staff.

SKINNY JUMP

Skinny JUMP provided accessible wireless broadband to people who face barriers to getting connected online. In 2021 we helped over 40 families to get connected with Skinny JUMP. During the Covid Lockdown our social workers were able to deliver JUMP modems directly to people who needed them

KAUMATUA FLATS

CILT IS THE ONLY REGISTERED
COMMUNITY HOUSING PROVIDER
IN THE EASTERN WAIKATO.

CILT owns and maintains 14 accommodation units in Coromandel Township. At the end of 2021, all units were fully tenanted, with a steady waitlist.

As a registered community housing provider, we were able to support new tenants on low income to access the Ministry of Social Development Income Rent Related Subsidy.

VOCATIONAL SERVICES

CILT OPERATES TWO DAY PROGRAMMES FOR PEOPLE WITH A DISABILITY:

TE MANA TANGATA

(THE WORK CO-OP) IN COROMANDEL TOWN AND **ARTISTS IN THE MAKING** IN WHITIANGA.

Our two Vocational Services Programmes: Te Mana Tangata, and Artists In the Making, provide participants with access to employment, social and life skills, community work and the development of exceptional works of art.

TE MANA TANGATA

For a while the participants have been thinking they would like a name change at the Work Co-op. Together they have chosen the name Te Mana Tangata, this as it is fitting for them and what they want to achieve as part of their goals. To reflect the changes of the past few years and bring life and vibrancy to the programme.

2021 was a big year for Te Mana Tangata. New things were happening and new faces were coming in. We have new programmes to enhance our participants skills which helps with the goals they have set for themselves. Mosaic has been a great creative outlet for our participants, one of the participants has learned how to use their phone technology, another has participated in singing which has brought out their confidence in performing in front of others, achieving a big goal.

At Christmas time the participants were asked to perform at the “carols in the park “ it was beautiful to see the Work Co-op up on stage. One of the participants is a singing teacher and has been helping us with songs and waiata.

The artwork that has been created is outstanding: one of the participants goals is to produce a piece of artwork that they can show in a gallery and that one day would be sold.

We ran a 5-day wananga on Rongoa Maori which included spending time in the bush and also making Kawakawa Pani (Balm) and Wairakau (Drink).

Every second week a group of participants go to our Kaumatua flats and help with the gardens and lawns. This a great time to spend with the kaumatua providing companionship. We chat with them as they don't have many people coming to see them.

Te Mana Tangata maintain a good work ethic around our community.



“When I joined the Work Co-op 12 months ago I didn't really talk or eat. Now I fully take part and enjoy talking with everyone.”

Participant quote



“I thoroughly enjoyed it. Just sitting and breathing. It brought me out of where I was. Made me feel alive to learn about plants. My favourite time of the week was holding the plants and getting the warm feeling. I look forward to making more Rongoa”

Participant quote



ARTISTS IN THE MAKING

Our members have a great rapport and enjoy each other's company. They look out for each other and encourage each other, which makes the art studio a homely and supportive place to be. For some clients the opportunity to get out of the house, have a coffee and a chat can really bring a sense of connection and belonging into their lives. This is further enriched by the activities that we do. The range of arts and crafts skills on offer, enable our members to develop further skills they may have, or learn a new technique entirely. We have been offering painting, drawing, mosaic, candle making, sewing and printmaking. We are open and responsive to suggestions of activities that clients may want to try out and aim to empower our clients. One of our clients ran a candle making workshop for the others which was enjoyed by all and gave that client a sense of purpose and increased her confidence.

This year we have had fourteen clients attending the studio space. Nine of these clients have been attending regularly either one or two days per week, and the others attended until Covid restrictions meant that they either decided to wait until the restrictions were over, or attended a reduced number of hours.

Two clients were with us for a short time after a crisis and then relocated or entered employment. Our two school transition students will be returning once the Covid restrictions are lifted. Our class size has been majorly affected by Covid restrictions and we have had to cut the numbers attending due to social distancing to between 4 and 6 members per class. Once Covid restrictions are lifted we will be able to offer more places for new clients. Recently we have started to interview again in order to offer places to new participants and we are very much looking forward to the time when we can increase the numbers of clients attending.

During the lockdown we created art packs for our clients and these were delivered by Lizzie our senior support worker who visited and did shopping for one client who lives alone. We kept up communications by phone and regular check ins kept everyone connected. Earlier in the year we had a very successful outing to Thames in partnership with the Hauraki lifestyle trust. Here the group were able to try out some new art techniques and one of our members had a piece chosen and professionally framed for the Thames Artsider exhibition.

We applied for some funding from the Church Op shop and secured money to purchase a small printing press. Our clients have been enjoying creating press prints and lino cuts since then.

We were fortunate to have screen printer Pete Sephton hold a workshop at the studio. This was a project started four years ago. During the session, we learned how to set up the studio and create and burn screens and print t-shirts. This is now an extra skill we can offer to our members and has proved very popular. "This is the most Epic thing I've ever done" was the quote of the day from one of our school students. In fact, one of our clients is planning to create her own part time business creating prints and teaching others from her own place in the future.

Despite the limitations that Covid has brought this year, we have continued to gather together, support one another and create some wonderful pieces of art.



**In 2021 ATM had 14 participants.
With a combined total of 2750 hours of art making**



Screenprinting with Pete Sephton



“It’s given me more confidence to speak up. There’s no judgement. You can laugh out loud and it makes you feel good”

Participant quote



ATM Participants Bev, Karena, and Claudine at work



WHANAU SUPPORT SERVICES

DURING 2020, WHANAU SOCIAL SERVICES PROVIDED SUPPORT FOR 66 FAMILIES / WHANAU IN THE COROMANDEL AND OUTLYING AREAS.

Whanau Support Services supported families and young people with achieving positive social and health outcomes. Our team offered a range of services, working in collaboration with other agencies, with support in mental health, family violence, addiction, affordable housing, unemployment, and medical support.

Our wonderful team of whanau support workers - Abbey Namana, Jean Ashby, and Mike Mann - delivered these projects through 2021:

Stengthening Families

Integrated Safety Response

Covid Responder

Whanau Resilience Fund

“Throughout this year the team have been delighted with the positive outcomes experienced by many Whanau”

A highlight of the year was taking a group of 12 youth on a surf trip to Matarangi Beach, on Coromandel’s East Coast. A fantastic day out doing something many of them had never experienced before.



Matarangi Surf Trip. 2021



THE HUB

A NEW HOME FOR CILT
AND COROMANDEL
COMMUNITY SERVICES

On the morning of 30th September 2021, we held a Huri Huri Whenua - Soil Turning Ceremony - to mark the beginning of construction of the Coromandel Hub.

After years of planning it was fantastic to finally begin! Since then, the build - led by builder Steve Wilson, and with Ross Gamble as Project Manager - has progressed steadily. We expect completion around October 2022.

**FOR MORE INFORMATION AND UPDATES ON THIS GREAT PROJECT HEAD TO:
WWW.CILT.ORG.NZ/HUB**



ENVIRONMENTAL INITIATIVES

WE OPERATED 3 PROGRAMMES AIMED AT REDUCING WASTE TO LANDFILL: THE COROMANDEL REFUSE TRANSFER STATION, THE GOLDMINE, AND THE BIZARRE.

THE GOLDMINE RE-USE CENTRE

IN 2021 AN ESTIMATED 10,000 INDIVIDUAL ITEMS WERE DIVERTED FROM LANDFILL AND RE-SOLD BACK INTO A SECOND LIFE.

The Goldmine is a re-use centre located at the Refuse Transfer Station to divert reusable goods waste away from landfill.

in 2021 we consulted with Thames Seagull Centre to see how we could improve in operation, efficiency and sustainability. Certain measures were put in place such as pre existing containers were moved to create an inwards goods system to process donations efficiently, rosters were increased, and the workshop turned into more shop space.

In 2021, the project diverted 10,000 units of donated goods from landfill. This is an incredible record considering closures and restrictions the project has faced due to COVID.

THE BIZARRE - COMMUNITY GRANT SCHEME



In 2021 we donated \$24,987 to 16 community groups. This money was generated through sales of quality used goods at The Bizarre - Coromandel Resale Shop.

FIND OUT MORE HERE
WWW.CILT.ORG.NZ/GRANTS

INCREDIBLE YEARS PARENT PROGRAMME

INCREDIBLE YEARS PROVIDES PARENTS AND CAREGIVERS WITH BUILDING RESOURCES AND STRENGTHENING PARENT-CHILD RELATIONSHIPS IN ORDER TO HELP PROMOTE CHILDREN'S EMOTIONAL, SOCIAL, AND ACADEMIC SKILLS

“This programme has helped me understand my children. How to use the right words in special moments of struggle.”

“Learning new tools, strategies and approaches to manage new challenging behaviours. Confidence and skills gained. Very enjoyable, highly recommended doing this course. Very valuable and worthwhile”

“The main benefit I gained from Incredible Years is the support, all parents struggle at times. My self esteem as a parent has gone up.”

CILT collaborated with the Ministry of Education to provide The Incredible Years Parent Programme for parents with preschool aged children. In 2021 we ran two 14 week Incredible Years courses.

Over these two courses 33 parents worked together to share experiences and learn new strategies such as: practicing relationship building through play, setting more definitive rules and boundaries, particularly around meal time and bed time, and growing in practicing self-affirmations and calming techniques both for themselves and with their children.

KIWI CAN

LIFE SKILLS AND VALUES PROGRAMME FOR 5 TO 12 YEAR OLDS.

Kiwi Can is a life-skills and values programme aimed at 5 – 12 year olds. CILT collaborates with the Graeme Dingle Foundation to facilitate the programme at Coromandel Area School and Colville School.

In 2021, we delivered high-energy, interactive and challenging lessons focusing on four themes – Positive Relationships, Respect, Integrity and Resilience. The schools involved have appreciated having Kiwi Can and say that we compliment their school culture and the values they promote. Kiwi Can is a safe space for tamariki to practice these values and decide how these values fit into who they are, as some are not as fortunate to rely on role models in their environment.

Our Kiwi Can leaders during 2021 were Daina Brown, Kana Tenboom, Danielle Van Resseghem and during the year we had the addition of Rose Dudson. All our leaders are great role models who, as well as leading action-packed and professional Kiwi Can lessons, are involved in the community in a variety of activities and have built long-lasting positive relationships with both students, parents, schools and community members.

After 17 years of prominently delivering the Kiwi Can programme in Coromandel schools, the contract with our biggest school was not renewed. Due to the impact COVID-19 has had on funding opportunities and availability to approach new schools in the area, this decision has resulted in Kiwi Can Coromandel ceasing to operate. It comes with great sadness to end Kiwi Can in this area, but we know the tools and skills the tamariki have learnt in their Kiwi Can journey so far will stay with them.



Easter Movie Night in the Coromandel Area School Library

In 2021 our Kiwi Can team planned and put on events open to all tamariki in the community. Proceeds made from these events helped raise much needed funds for the purchase of resources, equipment and prizes for our tamariki.

In April, Kiwi Can hosted a Movie Night. Everyone was invited to wear their comfortable clothes and bring pillows to the Coromandel Area School Library where we screened Hop and sold movie essential snacks and drinks.

KIWI CAN COMMUNITY PROJECT

Each year our leaders and tamariki take part in a community project. This not only teaches our tamariki that it is good to give back to our community but is beneficial to our local community.

This year, our main project was to organize and put on a much anticipated Halloween Disco. The Kiwi Can students of Coromandel Area School decided to help organise the event this year as an alternative to cater to whānau who are not fond of the 'trick or treating' tradition, so children in the community can still participate with their friends. This event was decided to be open to all tamariki in our community and not exclusively for Kiwi Can students.

Students were responsible for setting the date and time, creating signs for food, drinks and merchandise that were sold at the event, and decorations.

Due to COVID Alert Levels, our event was restricted to 100 participants, so we executed this with a pre-booking system to ensure we kept our total numbers controlled within this restriction.



Mussel Fritter stall with our sponsor Sanford Ltd

SUPPORTERS:
We thank all of our sponsors and supporters who make running Kiwi Can in our schools possible:

- SANFORD LTD
- THE LION FOUNDATION
- COROMANDEL AREA SCHOOL
- COLVILLE SCHOOL
- GRAEME DINGLE FOUNDATION
- MINISTRY OF EDUCATION
- GRASSROOTS TRUST
- SKY CITY HAMILTON COMMUNITY TRUST
- TRUST WAIKATO COMMUNITY ORGANISATION GRANT SCHEME
- ROTHBURY INSURANCE
- LOTTERY GRANT
- DV BRYANT TRUST
- KMART
- NZ RUGBY

In 2021 CILT worked with a broad range of other agencies and organisations locally, regionally and nationally to deliver community and social services:

Local

Te Patukirikiri
Ngati Pukenga ki Waiau
Ngati Porou ki Harataunga ki Mataora
Ngati Huarere
Thames Coromandel District Council
Coromandel Area School
Colville School
Colville Social Services Collective
Mercury Bay Area School
Moehau Environment Group
Coromandel Foodbank
Family Safety Services
Driving Creek Railway Ltd.
Coromandel - Colville Community Board
Colville Community Health Services Trust
Spirit of Coromandel Trust
Coromandel Budget Advisory Services
Te Wharekura O Manaia
Coromandel Bizarre Trust
Seagull Centre Trust
CAPS Hauraki
Whitianga Social Services
Whangamata Resource Centre
Waihi Resource Centre
Thrive Coromandel Trust
Coromandel Information Centre
CAPS Hauraki Youth Services
Age Concern Thames
Te Korowai Hauora O Hauraki
Thames Hospital
Manaaki Centre
Coromandel Family Health Centre

Regional

Community Waikato
Support Providers Allied Network Trust
Trust Waikato
Waikato Institute of Technology (WINTERC)
Waikato District Health Board
Waikato Regional Council
The Supported Life Style Hauraki Trust

National

Community Mental Health Services
Alternative Education National Body
New Zealand Housing Foundation
Oranga Tamariki
The Blind Foundation
Ngati Kapo
Te Roopu Tiaki Hunga Hauaa
Department of Corrections
Workbridge
Ministry of Education
Kainga Ora
Ministry of Social Development
New Zealand Lottery Grants Board
Sanford Ltd.
Community Organisation Grants Online
NZ Community Trust
Department of Conservation
NZ Police
Ministry of Health

These businesses and organisations are regular tenants of Tiki House:

Purnell Ltd
Total Hearing Care
Counselling and Family Therapy Services
Manaaki Centre
Department of Corrections
To Korowai
ACC
Dementia Waikato
Contact Care
Progress to Health
Peninsula Osteopaths
Workwise

CILT is a member of or affiliated with the following organisations:

Community Housing Aotearoa
Community Networks Aotearoa
Inclusive NZ
Social Servicer Providers Aotearoa
Techsoup
Firstport
Coromandel Business Association
ACE Aotearoa
Hauraki Family Violence Collective - Eastern Hub
Waste Management Institute NZ
Disabled Persons Assembly (NZ)
Volunteering Waikato
The Graeme Dingle Foundation
Community Recycling Network
NZ Federation of Disability Information Centres (NZFDIC)
NZ Disability Support Network

Thank you to these organisations for supporting our activities in 2021



MINISTRY OF SOCIAL DEVELOPMENT
TE MANATŪ WHAKAHIATO ORA



ORANGA TAMARIKI
Ministry for Children



Trust Waikato
TE PUNA O WAIKATO



Community Organisation Grants Scheme



Office for Seniors
Te Tari Kaumātua

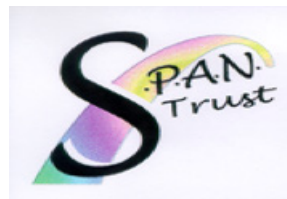
Administered by the Ministry of Social Development



SANFORD



Waikato
District Health Board



S.P.A.N. Trust



CAPS Hauraki
SUPPORTING FAMILIES



LEN REYNOLDS TRUST



Supported by **Lotto** New Zealand
Funded by **NZ Lottery Grants Board**



NZCT
NZ COMMUNITY TRUST



COMMUNITY WAIKATO
"Thriving Communities"
Hapori Mauriora



THAMES COROMANDEL DISTRICT COUNCIL



THE LION FOUNDATION
Here for good



D.V. BRYANT TRUST
Enhancing Human Welfare in the Waikato



Digital Inclusion Alliance Aotearoa



MINISTRY OF EDUCATION
TE TĀHUHU O TE MĀTAURANGA



grassroots
grassrootstrust.co.nz



GRAEME DINGLI FOUNDATION
Transforming young lives forever
Oranga Taiohi, Oranga Ake



Lottery Grants Board
Te Puna Tahua
LOTTO FUNDS FOR YOUR COMMUNITY



COROMANDEL AREA SCHOOL
FESTINALENTE



Rothbury
INSURANCE BROKERS



COLVILLE SOCIAL SERVICE COLLECTIVE
CSSC
supporting the far northern Coromandel communities

Coromandel Independent Living Trust

45 Tiki Road, Coromandel
cilt.org.nz
07 866 8358
cilt.org.nz

